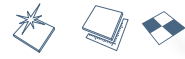
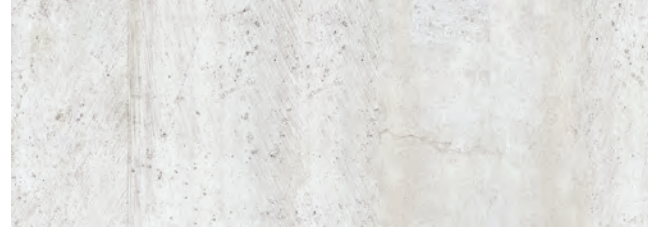


SENA



Revestimiento Monoporosa Rectificado / Wall Tiles Rectified



SENA ACERO
31,6x90x0,9cm P3470643 / 100121113 G261

Butech recomienda junta / Butech recommends joint:
Colorstuk Rapid n Manhattan B22502002 / 100004295

PERFIL SEN A ACERO
1,5x31,6cm P6209081 / 100133076 G77

SENA CALIZA
31,6x90x0,9cm P3470644 / 100121115 G261

Butech recomienda junta / Butech recommends joint:
Colorstuk Rapid n Gris B22502013 / 100004305

PERFIL SEN A CALIZA
1,5x31,6cm P6209080 / 100133077 G77

TECHNICAL SPECS · INFORMACIÓN TÉCNICA

EMBALAJE / PACKING

FORMATO cm	PZ/CJ	M2/CJ	CJ/PAL	M2/PAL	*KG/CJ	*KG/PAL	Adhesivo
31,6x90cm	4	1,14	57	64,84	19,09	1088,01	Fr-one n
1,5x31,6cm	30	0,28	42	11,94	3,83	160,93	Fr-one n

*valores aproximados. *approximated values.



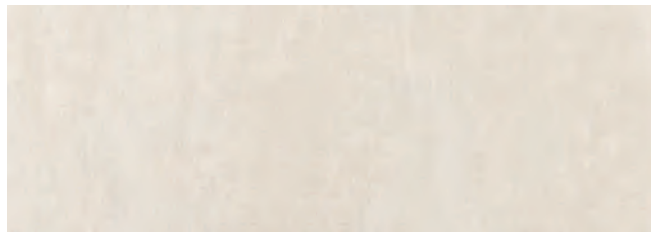
PAVIMENTO COMBINABLE: SERIE SEN A 59,6x59,6cm
FLOOR TILES COMBINATIONS: SEN A SERIE 59,6x59,6cm



SAFARI



Revestimiento Monoporosa Rectificado / Wall Tiles Rectified



SAFARI ARENA
31,6x90x0,9cm P3470822 / 100172733 G261

Butech recomienda junta / Butech recommends joint:
Colorstuk Rapid n Beige B22502016 / 100004308

PERFIL SAFARI ARENA
1,5x31,6cm P6209121 / 100173563 G77

SAFARI CALIZA
31,6x90x0,9cm P3470824 / 100172734 G261

Butech recomienda junta / Butech recommends joint:
Colorstuk Rapid n Marfil B22502009 / 100004302

PERFIL SAFARI CALIZA
1,5x31,6cm P6209120 / 100173570 G77

TECHNICAL SPECS · INFORMACIÓN TÉCNICA

EMBALAJE / PACKING

FORMATO cm	PZ/CJ	M2/CJ	CJ/PAL	M2/PAL	*KG/CJ	*KG/PAL	Adhesivo
31,6x90cm	4	1,14	57	64,84	16,2	923,4	Fr-one n
1,5x31,6cm	30	0,28	42	11,94	3,72	166,24	Fr-one n

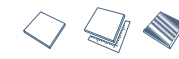
*valores aproximados. *approximated values.



PAVIMENTO COMBINABLE: SERIE SAFARI 59,6x59,6cm
FLOOR TILES COMBINATIONS: SAFARI SERIE 59,6x59,6cm



JAPAN



Revestimiento Monoporosa Rectificado / Wall Tiles Rectified



JAPAN BLANCO
31,6x90x0,9cm P3470669 / 100135524 G261

Butech recomienda junta / Butech recommends joint:
Colorstuk Rapid n Gris B22502013 / 100004305

PERFIL JAPAN BLANCO
1,5x31,6cm P6209103 / 100138755 G77

JAPAN LINE BLANCO
31,6x90x0,9cm P3470665 / 100135526 G271

Butech recomienda junta / Butech recommends joint:
Colorstuk Rapid n Gris B22502013 / 100004305



JAPAN MARINE
31,6x90x0,9cm P3470658 / 100135530 G261

Butech recomienda junta / Butech recommends joint:
Colorstuk Rapid n Cemento B22502004 / 100004297

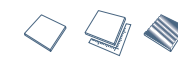
PERFIL JAPAN MARINE
1,5x31,6cm P6209088 / 100138757 G77

JAPAN LINE MARINE
31,6x90x0,9cm P3470672 / 100135528 G271

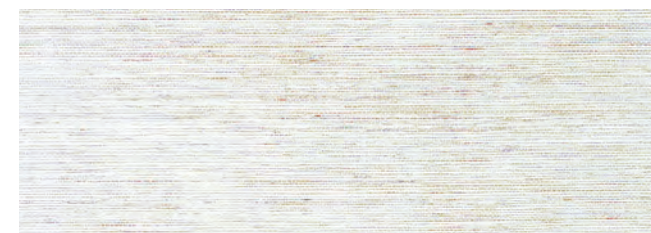
Butech recomienda junta / Butech recommends joint:
Colorstuk Rapid n Cemento B22502004 / 100004297



YAKARTA



Revestimiento Monoporosa Rectificado / Wall Tiles Rectified



YAKARTA BLANCO
31,6x90x0,93cm P3470502 / 100096156 G261

Butech recomienda junta / Butech recommends joint:
Colorstuk Rapid n Beige B22502016 / 100004308

PERFIL YAKARTA BLANCO
1,5x31,6cm P6200371 / 100029155 G77

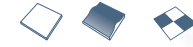
TECHNICAL SPECS · INFORMACIÓN TÉCNICA

EMBALAJE / PACKING

FORMATO cm	PZ/CJ	M2/CJ	CJ/PAL	M2/PAL	*KG/CJ	*KG/PAL	Adhesivo
31,6x90cm	4	1,14	57	64,84	18,56	1055	Fr-one n
1,5x31,6cm	30	0,28	42	11,94	3,83	160,93	Fr-one n

*valores aproximados. *approximated values.

RODANO LINEAL



Revestimiento Monoporosa / Wall Tiles



RODANO LINEAL ACERO

31,6x59,2x0,95cm P2310716 / 100177522 G233

Butech recomienda junta / Butech recommends joint:
Colorstuk Rapid n Manhattan B22502002 / 100004295

RODANO LINEAL CALIZA

31,6x59,2x0,95cm P2310715 / 100177523 G233

Butech recomienda junta / Butech recommends joint:
Colorstuk Rapid n Gris B22502013 / 100004305

TECHNICAL SPECS · INFORMACIÓN TÉCNICA

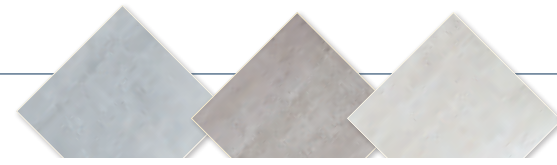
EMBALAJE / PACKING

FORMATO cm	PZ/CJ	M2/CJ	CJ/PAL	M2/PAL	*KG/CJ	*KG/PAL	Adhesivo
31,6x59,2cm	6	1,13	72	81,22	17,45	1256,2	Tixocem + / One-flex Premium

*valores aproximados. *approximated values.



PAVIMENTO COMBINABLE: SERIE RODANO 44,3x44,3cm ·
FLOOR TILES COMBINATIONS: RODANO SERIE 44,3x44,3cm



SENA



Revestimiento Monoporosa Rectificado / Wall Tiles Rectified



SENA ACERO

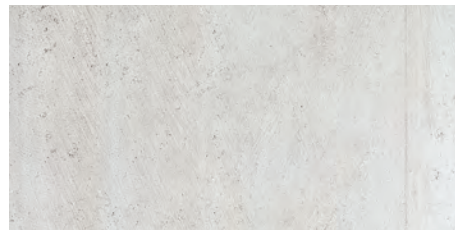
31,6x59,2x0,9cm P3219310 / 100217829 G226

Butech recomienda junta / Butech recommends joint:
Colorstuk Rapid n Manhattan B22502002 / 100004295

SENA TAUPE

31,6x59,2x0,9cm P3219309 / 100217860 G226

Butech recomienda junta / Butech recommends joint:
Colorstuk Rapid n Gris B22502013 / 100004305



SENA CALIZA

31,6x59,2x0,9cm P3219314 / 100217850 G226

Butech recomienda junta / Butech recommends joint:
Colorstuk Rapid n Gris B22502013 / 100004305

TECHNICAL SPECS · INFORMACIÓN TÉCNICA

EMBALAJE / PACKING

FORMATO cm	PZ/CJ	M2/CJ	CJ/PAL	M2/PAL	*KG/CJ	*KG/PAL	Adhesivo
31,6x59,2cm	6	1,128	72	81,22	18,558	1336,18	Tixocem + / One-flex Premium

*valores aproximados. *approximated values.

DOVER · DOVER MODERN LINE



Revestimiento Monoporosa / Wall Tiles



DOVER ACERO

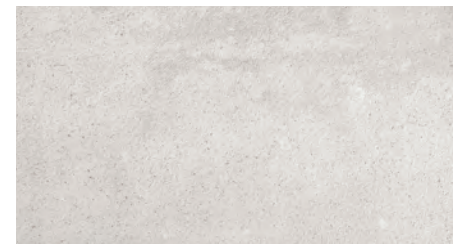
31,6x59,2x0,9cm P3219280 / 100157353 G226

Butech recomienda junta / Butech recommends joint:
Colorstuk Rapid n Gris B22502013 / 100004305

DOVER MODERN LINE ACERO

31,6x59,2x1,14cm P3219281 / 100157373 G233

Butech recomienda junta / Butech recommends joint:
Colorstuk Rapid n Gris B22502013 / 100004305



DOVER CALIZA

31,6x59,2x0,9cm P3219283 / 100157356 G226

Butech recomienda junta / Butech recommends joint:
Colorstuk Rapid n Gris B22502013 / 100004305

DOVER MODERN LINE CALIZA

31,6x59,2x1,14cm P3219282 / 100157374 G233

Butech recomienda junta / Butech recommends joint:
Colorstuk Rapid n Gris B22502013 / 100004305



DOVER ANTIQUE



Revestimiento Monoporosa / Wall Tiles



DOVER ANTIQUE

31,6x59,2x0,9cm P3219277 / 100157355 G233

Butech recomienda junta / Butech recommends joint:
Colorstuk Rapid n Cemento B22502004 / 100004297

TECHNICAL SPECS · INFORMACIÓN TÉCNICA

EMBALAJE / PACKING

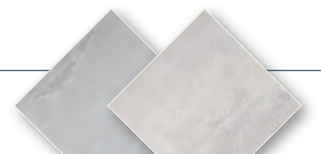
FORMATO cm	PZ/CJ	M2/CJ	CJ/PAL	M2/PAL	*KG/CJ	*KG/PAL	Adhesivo
31,6x59,2cm	6	1,13	72	81,22	15,72	1131,84	Tixocem + / One-flex Premium
31,6x59,2cm Modern	5	0,94	72	67,68	14,35	1033,2	Tixocem + / One-flex Premium

*valores aproximados. *approximated values.



PAVIMENTO COMBINABLE: SERIE DOVER 44,3x44,3cm · PAG.212
FLOOR TILES COMBINATIONS: DOVER SERIES 44,3x44,3cm · PAG.212

- DOVER ANTIQUE ESTÁ FORMADO POR 9 DECORADOS DISTINTOS ALEATORIOS.
- DOVER ANTIQUE RANGE IS MADE IN 9 DIFFERENT RANDOM PATTERNS.



SENA



Gres Rectificado / Rectified Tiles



SENA ACERO
59,6x59,6cm P1857085 / 100228827 G347

Butech recomienda junta / Butech recommends joint:
Colorstuk Rapid n Manhattan B22502002 / 100004295

SENA CALIZA
59,6x59,6cm P1857084 / 100228841 G347

Butech recomienda junta / Butech recommends joint:
Colorstuk Rapid n Gris B22502013 / 100004305

TECHNICAL SPECS · INFORMACIÓN TÉCNICA

EMBALAJE / PACKING

FORMATO cm	PZ/CJ	M2/CJ	CJ/PAL	M2/PAL	*KG/CJ	*KG/PAL	Adhesivo
59,6x59,6cm	4	1,42	32	45,47	35,06	1122,05	one-flex n / maxifluid
9x59,6cm Zócalo	18	0,97	56	54,07	22,77	1275,12	one-flex n / maxifluid
31,6x59,6 Huella Tec.	2	0,42	48	19,97	12	576	one-flex n / maxifluid
31,6x59,6 Huella Tec. Esq	1	0,22	48	10,54	6	288	one-flex n / maxifluid

*valores aproximados. *approximated values.

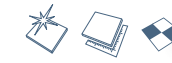
i INTENSIDAD DE TRÁNSITO PEATONAL: TRÁNSITO MODERADO
INTENSITY OF PEDESTRIAN TRANSIT: MODERATE TRANSIT

ZÓCALO		9x59,6cm	
SENA ACERO	P9210659 / 100228937	G30	
SENA CALIZA	P9210658 / 100228938	G30	

- HUELLA TÉCNICA 31,6x59,6cm

ESQUINA DERECHA		ESQUINA IZQUIERDA	
SENA ACERO	P9210665 / 100228936	G130	
SENA CALIZA	P9210664 / 100228944	G130	
	P9210679 / 100228972	G150	
	P9210680 / 100228980	G150	
	P9210669 / 100228946	G150	
	P9210676 / 100228947	G150	

OLIMPO



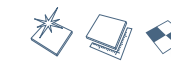
Gres Rectificado / Rectified Tiles



OLIMPO MARFIL S-R
59,6x59,6cm P1856974 / 100161111 G347

Butech recomienda junta / Butech recommends joint:
Colorstuk Rapid n Marfil B22502009 / 100004302

TRAVERTINO MEDICI



Gres Rectificado / Rectified Tiles



TRAVERTINO MEDICI S-R
59,6x59,6cm P1857033 / 100191337 G347

Butech recomienda junta / Butech recommends joint:
Colorstuk Rapid n Beige B22502016 / 100004308

TECHNICAL SPECS · INFORMACIÓN TÉCNICA

EMBALAJE / PACKING

FORMATO cm	PZ/CJ	M2/CJ	CJ/PAL	M2/PAL	*KG/CJ	*KG/PAL	Adhesivo
59,6x59,6cm	4	1,42	32	45,47	35,06	1122,05	one-flex n / maxifluid
9x59,6cm Zócalo	18	0,97	56	54,07	22,77	1275,12	one-flex n / maxifluid
31,6x59,6 Huella Tec.	2	0,42	48	19,97	12	576	one-flex n / maxifluid
31,6x59,6 Huella Tec. Esq	1	0,22	48	10,54	6	288	one-flex n / maxifluid

*valores aproximados. *approximated values.

i INTENSIDAD DE TRÁNSITO PEATONAL: TRÁNSITO MODERADO
INTENSITY OF PEDESTRIAN TRANSIT: MODERATE TRANSIT

ZÓCALO		9x59,6cm	
OLIMPO MARFIL	P9210447 / 100201700	G30	
MEDICI S-R	P9210668 / 100228939	G30	

- HUELLA TÉCNICA 31,6x59,6cm

ESQUINA DERECHA		ESQUINA IZQUIERDA	
OLIMPO MARFIL	P9210356 / 100185671	G130	
TRAVERT.MEDICI.	P9210430 / 100193860	G130	
	P9210425 / 100193857	G150	
	P9210441 / 100193824	G150	
	P9210413 / 100193848	G150	
	P9210439 / 100193873	G150	