

# RODANO · MOSAICO RODANO

Revestimiento Monoporosa Rectificado / Wall Tiles Rectified



REVESTIMIENTOS RECTIFICADOS  
WALL TILES RECTIFIED



**RODANO ACERO**  
31,6x90x0,9cm P3470631 / 100120789 G261  
Butech recomienda junta / Butech recommends joint: Colorstuk Rapid n Manhattan B22502002 / 100004295

**PERFIL RODANO ACERO**  
1,5x31,6cm P6209077 / 100126424 G77



**MOSAICO RODANO ACERO**  
31,6x90x1,13cm P3470624 / 100120782 G271  
Butech recomienda junta / Butech recommends joint: Colorstuk Rapid n Manhattan B22502002 / 100004295



**RODANO SILVER**  
31,6x90x0,9cm P3470633 / 100120798 G261  
Butech recomienda junta / Butech recommends joint: Colorstuk Rapid n Cemento B22502004 / 100004297

**PERFIL RODANO SILVER**  
1,5x31,6cm P6209076 / 100126425 G77



**MOSAICO RODANO SILVER**  
31,6x90x1,13cm P3470625 / 100120785 G271  
Butech recomienda junta / Butech recommends joint: Colorstuk Rapid n Cemento B22502004 / 100004297



**RODANO TAUPE**  
31,6x90x0,9cm P3470634 / 100120792 G261  
Butech recomienda junta / Butech recommends joint: Colorstuk Rapid n Gris B22502013 / 100004305

**PERFIL RODANO TAUPE**  
1,5x31,6cm P6209078 / 100126426 G77



**MOSAICO RODANO TAUPE**  
31,6x90x1,13cm P3470627 / 100120783 G271  
Butech recomienda junta / Butech recommends joint: Colorstuk Rapid n Gris B22502013 / 100004305



**RODANO CALIZA**  
31,6x90x0,9cm P3470632 / 100120795 G261  
Butech recomienda junta / Butech recommends joint: Colorstuk Rapid n Gris B22502013 / 100004305

**PERFIL RODANO CALIZA**  
1,5x31,6cm P6209079 / 100126428 G77

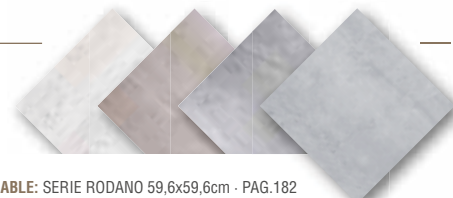


**MOSAICO RODANO CALIZA**  
31,6x90x1,13cm P3470626 / 100120784 G271  
Butech recomienda junta / Butech recommends joint: Colorstuk Rapid n Gris B22502013 / 100004305

## TECHNICAL SPECS · INFORMACIÓN TÉCNICA

EMBALAJE / PACKING							
FORMATO cm	PZ/CJ	M2/CJ	CJ/PAL	M2/PAL	*KG/CJ	*KG/PAL	Adhesivo
31,6x90cm	4	1,14	57	64,84	18,42	1049,73	Fr-one n
31,6x90cm Mos.	3	0,85	66	56,31	14,74	972,79	Fr-one n
1,5x31,6cm	30	0,28	42	11,94	3,83	160,93	Fr-one n

\*valores aproximados. \*approximated values.



**i** PAVIMENTO COMBINABLE: SERIE RODANO 59,6x59,6cm - PAG.182  
FLOOR TILES COMBINATIONS: RODANO SERIES 59,6x59,6cm - PAG.182



# SENA ACERO 31,6x90cm

# RODANO · MOSAICO RODANO

Revestimiento Monoporosa / Wall Tiles



**RODANO ACERO** 31,6x59,2x0,9cm  
P2310706 / 100123783 G226  
Butech recomienda junta / Butech recommends joint:  
Colorstuk Rapid n Manhattan B22502002 / 100004295



**MOSAICO RODANO ACERO** 31,6x59,2x1,13cm G233  
P2310708 / 100124082  
Butech recomienda junta / Butech recommends joint:  
Colorstuk Rapid n Manhattan B22502002 / 100004295



**RODANO TAUPE** 31,6x59,2x0,9cm G226  
P2310704 / 100123785  
Butech recomienda junta / Butech recommends joint:  
Colorstuk Rapid n Gris B22502013 / 100004305



**MOSAICO RODANO TAUPE** 31,6x59,2x1,13cm G233  
P2310709 / 100124084  
Butech recomienda junta / Butech recommends joint:  
Colorstuk Rapid n Gris B22502013 / 100004305



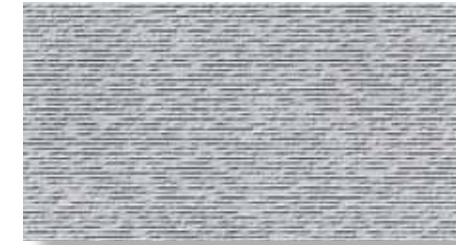
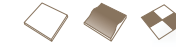
**RODANO CALIZA** 31,6x59,2x0,9cm G226  
P2310705 / 100123784  
Butech recomienda junta / Butech recommends joint:  
Colorstuk Rapid n Gris B22502013 / 100004305



**MOSAICO RODANO CALIZA** 31,6x59,2x1,13cm G233  
P2310707 / 100124083  
Butech recomienda junta / Butech recommends joint:  
Colorstuk Rapid n Gris B22502013 / 100004305

# RODANO LINEAL

Revestimiento Monoporosa / Wall Tiles



**RODANO LINEAL ACERO** 31,6x59,2cm G233  
P2310716 / 100177522  
Butech recomienda junta / Butech recommends joint:  
Colorstuk Rapid n Manhattan B22502002 / 100004295



**RODANO LINEAL TAUPE** 31,6x59,2cm G233  
P2310714 / 100177532  
Butech recomienda junta / Butech recommends joint:  
Colorstuk Rapid n Gris B22502013 / 100004305



**RODANO LINEAL CALIZA** 31,6x59,2cm G233  
P2310715 / 100177523  
Butech recomienda junta / Butech recommends joint:  
Colorstuk Rapid n Gris B22502013 / 100004305

REVESTIMIENTOS  
WALL TILES

REVESTIMIENTOS  
WALL TILES

## TECHNICAL SPECS · INFORMACIÓN TÉCNICA

### EMBALAJE / PACKING

FORMATO cm	PZ/CJ	M2/CJ	CJ/PAL	M2/PAL	*KG/CJ	*KG/PAL	Adhesivo
31,6x59,2cm	6	1,13	72	81,22	15,72	1131,84	Fr-one n
31,6x59,2cm Mosaico	5	0,94	72	67,68	14,35	1033,2	Fr-one n

\*valores aproximados. \*approximated values.



PAVIMENTO COMBINABLE: SERIE RODANO 44,3x44,3cm - PAG.214  
FLOOR TILES COMBINATIONS: RODANO SERIES 44,3x44,3cm - PAG.214



## TECHNICAL SPECS · INFORMACIÓN TÉCNICA

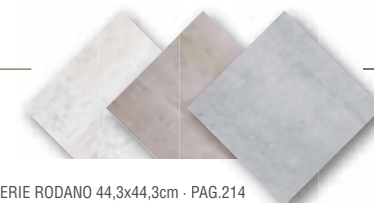
### EMBALAJE / PACKING

FORMATO cm	PZ/CJ	M2/CJ	CJ/PAL	M2/PAL	*KG/CJ	*KG/PAL	Adhesivo
31,6x59,2cm	6	1,13	72	81,22	17,45	1256,2	Fr-one n

\*valores aproximados. \*approximated values.



PAVIMENTO COMBINABLE: SERIE RODANO 44,3x44,3cm - PAG.214  
FLOOR TILES COMBINATIONS: RODANO SERIES 44,3x44,3cm - PAG.214





# RODANO

Gres Porcellanato Rectificado · Color Masa / Rectified Porcellanato Tiles · Coloured Biscuit



**RODANO ACERO S-R**  
80x80x1,2cm P1760079 / 100154670 G369  
59,6x59,6x1,1cm P1856901 / 100138631 G354  
Butech recomienda junta / Butech recommends joint:  
Colorstuk Rapid n Manhattan B22502002 / 100004295



**RODANO ACERO ANTISLIP S-R**  
59,6x59,6x1,1cm P1856902 / 100138630 G359



**RODANO CALIZA S-R**  
80x80x1,2cm P1760080 / 100154671 G369  
59,6x59,6x1,1cm P1856900 / 100138632 G354  
Butech recomienda junta / Butech recommends joint:  
Colorstuk Rapid n Gris B22502013 / 100004305



**RODANO SILVER S-R**  
80x80x1,2cm P1760075 / 100153706 G369  
59,6x59,6x1,1cm P1856904 / 100138634 G354  
Butech recomienda junta / Butech recommends joint:  
Colorstuk Rapid n Cemento B22502004 / 100004297



**RODANO SILVER ANTISLIP S-R**  
59,6x59,6x1,1cm P1856903 / 100138633 G359



**RODANO TAUPE S-R**  
59,6x59,6x1,1cm P1856905 / 100138636 G354  
Butech recomienda junta / Butech recommends joint:  
Colorstuk Rapid n Cemento B22502004 / 100004297



**RODANO TAUPE ANTISLIP S-R**  
59,6x59,6x1,1cm P1856899 / 100138635 G359



# RODANO ACERO 59,6x59,6cm

## TECHNICAL SPECS · INFORMACIÓN TÉCNICA

### EMBALAJE / PACKING

FORMATO cm	PZ/CJ	M2/CJ	CJ/PAL	M2/PAL	*KG/CJ	*KG/PAL	Adhesivo
80x80cm	2	1,28	40	51,2	35,7	1417,32	one-flex n / maxifluid
59,6x59,6cm	4	1,42	32	45,47	35,24	1127,62	one-flex n / maxifluid
9,6x59,6cm Zócalo	18	0,97	56	54,07	23,25	1301,92	one-flex n
9x80cm Zócalo	12	0,86	42	36,29	23,16	972,72	one-flex n
31,6x59,6cm Huella Tec.	2	0,42	48	19,97	11,33	543,84	one-flex n / maxifluid
31,6x59,6cm Huella Tec.Esq.	1	0,21	48	9,98	5,67	271,92	one-flex n / maxifluid

\*valores aproximados. \*approximated values.

**1** INTENSIDAD DE TRÁNSITO PEATONAL: TRÁNSITO INTENSO  
INTENSITY OF PEDESTRIAN TRANSIT: HARD TRANSIT



ZÓCALO	9x59,6cm	
RODANO ACERO	P4160006 / 100141005	G63
RODANO SILVER	P4160010 / 100141007	G63
RODANO CALIZA	P4160009 / 100141006	G63



ZÓCALO	9x59,6cm	
RODANO ACERO	P9210163 / 100138027	G30
RODANO SILVER	P9210150 / 100137975	G30
RODANO TAUPE	P9210152 / 100137976	G30
RODANO CALIZA	P9210151 / 100137974	G30



- HUELLA TÉCNICA 31,6x59,6cm		ESQUINA DERECHA		ESQUINA IZQUIERDA	
RODANO ACERO	P9210134 / 100123907	G130	P9210199 / 100140956	G150	P9210133 / 100123908
RODANO ACERO ANT.	P9210234 / 100148524	G130	P9210232 / 100148522	G150	P9210233 / 100148523
RODANO SILVER	P9210180 / 100138071	G130	P9210179 / 100138029	G150	P9210181 / 100138070
RODANO SILVER ANT.	P9210242 / 100149822	G130	P9210238 / 100149618	G150	P9210239 / 100149820
RODANO TAUPE	P9210186 / 100140947	G130	P9210200 / 100140958	G150	P9210193 / 100140967
RODANO TAUPE ANT.	P9210241 / 100149823	G130	P9210240 / 100149619	G150	P9210243 / 100149821
RODANO CALIZA	P9210142 / 100130107	G130	P9210202 / 100140957	G150	P9210198 / 100140966

- HUELLA TÉCNICA 31,6x80cm		- HUELLA TÉCNICA ESQ. DER/IZQ. 31,6x80cm	
		G153	



# RODANO ACERO 44,3x44,3cm

## RODANO

Gres Porcellanato / Porcellanato Tiles



**RODANO ACERO**  
44,3x44,3x1cm P2460033 / 100123817 G311  
Butech recomienda junta / Butech recommends joint:  
Colorstuk Rapid n Manhattan B22502002 / 100004295



**RODANO TAUPE**  
44,3x44,3x1cm P2460032 / 100123819 G311  
Butech recomienda junta / Butech recommends joint:  
Colorstuk Rapid n Cemento B22502004 / 100004297



**RODANO CALIZA**  
44,3x44,3x1cm P2460034 / 100123818 G311  
Butech recomienda junta / Butech recommends joint:  
Colorstuk Rapid n Gris B22502013 / 100004305

### TECHNICAL SPECS - INFORMACIÓN TÉCNICA

#### EMBALAJE / PACKING

FORMATO cm	PZ/CJ	M2/CJ	CJ/PAL	M2/PAL	*KG/CJ	*KG/PAL	Adhesivo
44,3x44,3cm	5	0,98	66	64,76	22,65	1494	flexitec n
10x44,3cm Zócalo	20	0,89	72	63,79	18,34	1320,48	one-flex n

\*valores aproximados. \*approximated values.

**i**  
INTENSIDAD DE TRÁNSITO PEATONAL: TRÁNSITO MODERADO  
INTENSITY OF PEDESTRIAN TRANSIT: MODERATE TRANSIT

ZÓCALO	10x44,3cm	
RODANO ACERO	P8270053 / 100141845	G7
RODANO TAUPE	P8270054 / 100141846	G7
RODANO CALIZA	P8270046 / 100130259	G7



- HUELLA TÉCNICA 31,6x44,3cm  
RODANO

ESQUINA DERECHA

ESQUINA IZQUIERDA

G125

G138

G138