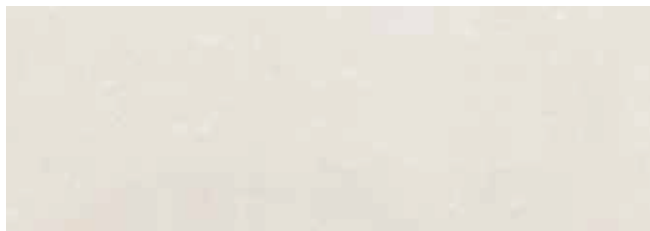


BLUESTONE

Revestimiento Monoporosa Rectificado / Wall Tiles Rectified



BLUESTONE BONE
31,6x90x0,9cm P3470853 / 100181372 G261
Butech recomienda junta / Butech recommends joint: Colorstuk Rapid n Gris B22502013 / 100004305

PERFIL BLUESTONE BONE
1,5x31,6cm P6209128 / 100181476 G77



BLUESTONE ACERO
31,6x90x0,9cm P3470854 / 100181360 G261
Butech recomienda junta / Butech recommends joint: Colorstuk Rapid n Manhattan B22502002 / 100004295

PERFIL BLUESTONE ACERO
1,5x31,6cm P6209127 / 100181482 G77



BLUESTONE TOPO
31,6x90x0,9cm P3470852 / 100181358 G261
Butech recomienda junta / Butech recommends joint: Colorstuk Rapid n Gris B22502013 / 100004305

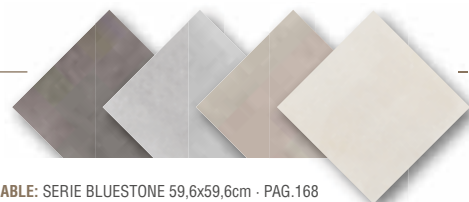
PERFIL BLUESTONE TOPO
1,5x31,6cm P6209129 / 100181502 G77

TECHNICAL SPECS · INFORMACIÓN TÉCNICA

EMBALAJE / PACKING

FORMATO cm	PZ/CJ	M2/CJ	CJ/PAL	M2/PAL	*KG/CJ	*KG/PAL	Adhesivo
31,6x90cm	4	1,14	57	64,84	18,34	1045,74	Fr-one n
1,5x31,6cm	30	0,28	42	11,94	3,83	160,93	Fr-one n

*valores aproximados. *approximated values.



PAVIMENTO COMBINABLE: SERIE BLUESTONE 59,6x59,6cm - PAG.168
FLOOR TILES COMBINATIONS: BLUESTONE SERIES 59,6x59,6cm - PAG.168

BLUESTONE

Gres Porcellanato Rectificado · Color Masa / Rectified Porcellanato Tiles · Coloured Biscuit

R9

SRV
CLASE 1



BLUESTONE SILVER S-R
80x80x1,2cm P1760094 / 100173974 G369
59,6x59,6x1,1cm P1857002 / 100179057 G354
Butech recomienda junta / Butech recommends joint:
Colorstuk Rapid n Cemento B22502004 / 100004297



BLUESTONE ACERO S-R
80x80x1,2cm P1760093 / 100173994 G369
59,6x59,6x1,1cm P1857003 / 100179074 G354
Butech recomienda junta / Butech recommends joint:
Colorstuk Rapid n Manhattan B22502002 / 100004295



BLUESTONE TOPO S-R
80x80x1,2cm P1760092 / 100173975 G369
59,6x59,6x1,1cm P1857001 / 100179065 G354
Butech recomienda junta / Butech recommends joint:
Colorstuk Rapid n Manhattan B22502002 / 100004295



BLUESTONE BONE S-R
80x80x1,2cm P1760095 / 100179075 G369
59,6x59,6x1,1cm P1857005 / 100179056 G354
Butech recomienda junta / Butech recommends joint:
Colorstuk Rapid n Gris B22502013 / 100004305



DECO BLUESTONE S-R
80x80x1,2cm P1760096 / 100179066 G372
59,6x59,6x1,1cm P1857004 / 100179076 G359
Butech recomienda junta / Butech recommends joint:
Colorstuk Rapid n Cemento B22502004 / 100004297



DIRECCIONALIDAD
DIRECCIONALITY



BLUESTONE TOPO 59,6x59,6cm

TECHNICAL SPECS · INFORMACIÓN TÉCNICA

EMBALAJE / PACKING

FORMATO cm	PZ/CJ	M2/CJ	CJ/PAL	M2/PAL	*KG/CJ	*KG/PAL	Adhesivo
80x80cm	2	1,28	40	51,2	33,89	1355,9	one-flex n / maxifluid
59,6x59,6cm	4	1,42	32	45,47	37,49	1127,62	one-flex n / maxifluid
9,6x59,6cm Zócalo	18	0,97	56	54,07	23,25	1301,92	one-flex n
9x80cm Zócalo	12	0,86	42	36,29	23,16	972,72	one-flex n
31,6x59,6cm Huella Tec.	2	0,42	48	19,97	11,33	543,84	one-flex n / maxifluid
31,6x59,6cm Huella Tec. Esq.	1	0,21	48	9,98	5,67	271,92	one-flex n / maxifluid

*valores aproximados. *approximated values.



- LA SERIE DECO BLUESTONE 80X80CM ESTÁ FORMADA POR 5 DECORADOS DISTINTOS ALEATORIOS.
- DECO BLUESTONE 80X80CM RANGE IS MADE IN 5 DIFFERENT RANDOM PATTERNS.
- LA SERIE DECO BLUESTONE 59,6X59,6CM ESTÁ FORMADA POR 6 DECORADOS DISTINTOS ALEATORIOS.
- DECO BLUESTONE 59,6X59,6CM RANGE IS MADE IN 6 DIFFERENT RANDOM PATTERNS.

ZÓCALO

	9x59,6cm	G30	9x80cm	G63
BLUESTONE SILVER	P9210337 / 100180341	G30	P4160021 / 100180402	G63
BLUESTONE ACERO	P9210345 / 100180291	G30	P4160020 / 100180410	G63
BLUESTONE TOPO	P9210343 / 100180312	G30	P4160023 / 100180404	G63
BLUESTONE BONE	P9210339 / 100180340	G30	P4160022 / 100180394	G63

· HUELLA TÉCNICA 31,6x59,6cm

	ESQUINA DERECHA	ESQUINA IZQUIERDA
BLUESTONE SILVER	P9210332 / 100180342 G130	P9210336 / 100180332 G150
BLUESTONE ACERO	P9210335 / 100180330 G130	P9210334 / 100180350 G150
BLUESTONE TOPO	P9210342 / 100180310 G130	P9210344 / 100180304 G150
BLUESTONE BONE	P9210333 / 100180331 G130	P9210338 / 100180360 G150

· HUELLA TÉCNICA 31,6x80cm

G153	· HUELLA TÉCNICA ESQ. DER/IZQ. 31,6x80cm	G181
------	--	------



STON-KER.

STON-KER.