



TIBET CALIZA 6 MOSAICO TIBET CALIZA 31,6x90cm

TIBET · MOSAICO TIBET

MONOPOROSA RECTIFICADO / RECTIFIED WALL TILES



TIBET CALIZA
31,6x90x0,9cm **P3470553 / 100098884** G261
Butech recomienda junta / Butech recommends joint: Colorstuk Rapid n Gris B22501001 / 100004294
Colorstuk Rapid n Beige B22502016 / 100004308

PERFIL TIBET CALIZA
1,5x90cm **P6560245 / 100106103** G97
1,5x31,6cm **P6209064 / 100106102** G77



MOSAICO TIBET CALIZA
31,6x90x1,03cm **P3470561 / 100099157** G271
Butech recomienda junta / Butech recommends joint: Colorstuk Rapid n Gris B22501001 / 100004294
Colorstuk Rapid n Beige B22502016 / 100004308

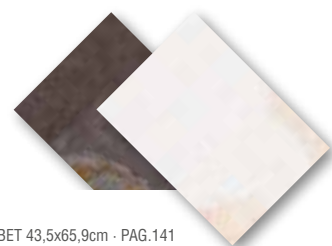


EMBALAJE / PACKING

FORMATO cm	PZ/CJ	MZ/CJ	CJ/PAL	MZ/PAL	*KG/CJ	*KG/PAL	Adhesivo
31,6x90cm	4	1,14	57	64,84	19,63	1096,45	Fr-one n
31,6x90cm Mos.	3	0,85	66	56,31	12,34	814,57	Fr-one n
1,5x31,6cm	30	0,28	42	11,94	3,72	156,24	Fr-one n
1,5x90cm	15	0,41	28	11,34	5,4	151,2	Fr-one n

*valores aproximados. *approximated values.

P PAVIMENTO COMBINABLE: SERIE TIBET 43,5x65,9cm · PAG.141
FLOOR TILES COMBINATIONS: TIBET SERIES 43,5x65,9cm · PAG.141



ARIZONA · MOSAICO ARIZONA

MONOPOROSA RECTIFICADO / RECTIFIED WALL TILES



ARIZONA STONE
31,6x90x0,9cm **P3470460 / 100095615** G261
Butech recomienda junta / Butech recommends joint: Colorstuk Rapid n Cemento B22502004 / 100004297

PERFIL ARIZONA STONE
1,5x90cm **P6560232 / 100098868** G97
1,5x31,6cm **P6209053 / 100098867** G77



ARIZONA CALIZA
31,6x90x0,9cm **P3470463 / 100095614** G261
Butech recomienda junta / Butech recommends joint: Colorstuk Rapid n Gris B22502013 / 100004305

PERFIL ARIZONA CALIZA
1,5x90cm **P6560231 / 100098866** G97
1,5x31,6cm **P6209052 / 100098865** G77



MOSAICO ARIZONA STONE
31,6x90x1,01cm **P3470577 / 100099970** G271
Butech recomienda junta / Butech recommends joint: Colorstuk Rapid n Cemento B22502004 / 100004297



MOSAICO ARIZONA CALIZA
31,6x90x1,01cm **P3470539 / 100098148** G271
Butech recomienda junta / Butech recommends joint: Colorstuk Rapid n Gris B22502013 / 100004305



MOSAICO ARIZONA ANTRACITA
31,6x90x1,01cm **P3470547 / 100098810** G271
Butech recomienda junta / Butech recommends joint: Colorstuk Rapid n Antracita B22502005 / 100004298

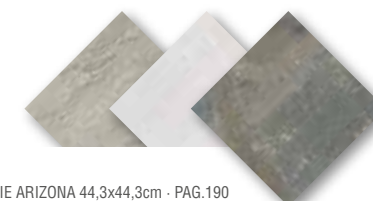


EMBALAJE / PACKING

FORMATO cm	PZ/CJ	MZ/CJ	CJ/PAL	MZ/PAL	*KG/CJ	*KG/PAL	Adhesivo
31,6x90cm	4	1,14	57	64,84	18,48	1053,36	Fr-one n
31,6x90cm Mos.	3	0,85	66	56,31	12,72	839,32	Fr-one n
1,5x31,6cm	30	0,28	42	11,94	3,6	151	Fr-one n
1,5x90cm	15	0,41	28	11,34	5,4	151,2	Fr-one n

*valores aproximados. *approximated values.

P PAVIMENTO COMBINABLE: SERIE ARIZONA 44,3x44,3cm · PAG.190
FLOOR TILES COMBINATIONS: ARIZONA SERIES 44,3x44,3cm · PAG.190



ARIZONA

GRES PORCELLANATO RECTIFICADO / COLOR MASA
RECTIFIED PORCELLANATO TILES / COLOURED BISCUIT



ARIZONA ANTRACITA S-R
43,5x65,9x1,1cm P1956628 / 100088078 G344
Butech recomienda junta / Butech recommends joint:
Colorstuk Rapid n Antracita B22502005 / 100004298



ARIZONA ANTRACITA ANTISLIP S-R
43,5x65,9x1,1cm P1956654 / 100111596 G354



ARIZONA ARENA S-R
43,5x65,9x1,1cm P1956629 / 100088083 G344
Butech recomienda junta / Butech recommends joint:
Colorstuk Rapid n Cemento B22502004 / 100004297
Colorstuk Rapid n Beige B22502016 / 100004308



ARIZONA ARENA ANTISLIP S-R
43,5x65,9x1,1cm P1956653 / 100111597 G354



ARIZONA STONE S-R
43,5x65,9x1,1cm P1956630 / 100088091 G344
Butech recomienda junta / Butech recommends joint:
Colorstuk Rapid n Cemento B22502004 / 100004297



ARIZONA STONE ANTISLIP S-R
43,5x65,9x1,1cm P1956652 / 100111599 G354



ARIZONA CALIZA S-R
43,5x65,9x1,1cm P1956631 / 100088088 G344
Butech recomienda junta / Butech recommends joint:
Colorstuk Rapid n Cemento B22502004 / 100004297
Colorstuk Rapid n Gris B22502013 / 100004305



ARIZONA CALIZA ANTISLIP S-R
43,5x65,9x1,1cm P1956675 / 100125191 G354



EMBALAJE / PACKING

FORMATO cm	PZ/CJ	MZ/CJ	CJ/PAL	MZ/PAL	*KG/CJ	*KG/PAL	Adhesivo
43,5x65,9cm	3	0,86	60	51,6	21,18	1270,92	one-flex n / maxifluid
9x65,9cm Zócalo	12	0,71	80	56,94	17,88	1430,79	one-flex n
31,6x65,9cm Huella Tec.	2	0,46	40	18,4	12,34	479,2	one-flex n / maxifluid
31,6x65,9cm Huella Tec. Esq.	1	0,23	40	9,2	6,17	246,79	one-flex n / maxifluid

*valores aproximados. *approximated values.

		ZÓCALO 9x65,9cm	
i INTENSIDAD DE TRÁNSITO PEATONAL: TRÁNSITO INTENSO INTENSITY OF PEDESTRIAN TRANSIT: HARD TRANSIT	ARIZONA ANTRACITA	P4060002 / 100139701	G34
	ARIZONA STONE	P4060001 / 100139704	G34
	ARIZONA CALIZA	P4060000 / 100139703	G34
	ARIZONA ARENA	P4060003 / 100139702	G34

		ESQUINA DERECHA				ESQUINA IZQUIERDA				
i INTENSIDAD DE TRÁNSITO PEATONAL: TRÁNSITO INTENSO INTENSITY OF PEDESTRIAN TRANSIT: HARD TRANSIT	ARIZONA ANTRACITA	P8680048 / 100122820	G130	P8680048 / 100122820	G150	P8680139 / 100122867	G150	P8680139 / 100122867	G150	
	ARIZONA ANTRACITA ANT.	P8680167 / 100139974	G130	P8680175 / 100139975	G150	P8680171 / 100139979	G150	P8680171 / 100139979	G150	
	ARIZONA STONE	P8680005 / 100122038	G130	P8680053 / 100122825	G150	P8680135 / 100122873	G150	P8680135 / 100122873	G150	
	ARIZONA STONE ANT.	P8680148 / 100136663	G130	P8680170 / 100139978	G150	P8680174 / 100140102	G150	P8680174 / 100140102	G150	
	ARIZONA CALIZA	P8680001 / 100121357	G130	P8680000 / 100121359	G150	P8680142 / 100122871	G150	P8680142 / 100122871	G150	
	ARIZONA CALIZA ANT.	P8680145 / 100125188	G130	P8680173 / 100139977	G150	P8680169 / 100140101	G150	P8680169 / 100140101	G150	
	ARIZONA ARENA	P8680007 / 100122034	G130	P8680052 / 100122822	G150	P8680134 / 100122869	G150	P8680134 / 100122869	G150	
	ARIZONA ARENA ANT.	P8680166 / 100137412	G130	P8680172 / 100139976	G150	P8680168 / 100140100	G150	P8680168 / 100140100	G150	
	- HUELLA TÉCNICA MEC. 31,6x65,9cm	G132	- HUELLA TÉCNICA ESQ. DER/IZQ. MEC 31,6x65,9cm				G153			

TIBET

GRES PORCELLANATO RECTIFICADO / COLOR MASA
RECTIFIED PORCELLANATO TILES / COLOURED BISCUIT



TIBET BLACK S-R
43,5x65,9x1,1cm P1981221 / 100097033 G344
Butech recomienda junta / Butech recommends joint:
Colorstuk Rapid n Negro B22502006 / 100004299



TIBET CALIZA S-R
43,5x65,9x1,1cm P1981222 / 100097035 G344
Butech recomienda junta / Butech recommends joint:
Colorstuk Rapid n Gris B22502013 / 100004305
Colorstuk Rapid n Beige B22502016 / 100004308



TIBET ARENA S-R
43,5x65,9x1,1cm P1981224 / 100097459 G344
Butech recomienda junta / Butech recommends joint:
Colorstuk Rapid n Beige B22502016 / 100004308

EMBALAJE / PACKING

FORMATO cm	PZ/CJ	MZ/CJ	CJ/PAL	MZ/PAL	*KG/CJ	*KG/PAL	Adhesivo
43,5x65,9cm	3	0,86	60	51,6	21,39	1283	one-flex n / maxifluid
9x65,9cm Zócalo	12	0,71	50	35,59	17,88	894,25	one-flex n
31,6x65,9cm Huella Tec.	2	0,46	40	18,40	12,34	493,58	one-flex n / maxifluid
31,6x65,9cm Huella Tec. Esq.	1	0,23	40	9,2	6,17	246,79	one-flex n / maxifluid

*valores aproximados. *approximated values.

		ZÓCALO 9x65,9cm	
i INTENSIDAD DE TRÁNSITO PEATONAL: TRÁNSITO INTENSO INTENSITY OF PEDESTRIAN TRANSIT: HARD TRANSIT	TIBET BLACK	P4060020 / 100139942	G34
	TIBET ARENA	P4060017 / 100139941	G34
	TIBET CALIZA	P4060023 / 100139943	G34

		ESQUINA DERECHA				ESQUINA IZQUIERDA				
i INTENSIDAD DE TRÁNSITO PEATONAL: TRÁNSITO INTENSO INTENSITY OF PEDESTRIAN TRANSIT: HARD TRANSIT	TIBET BLACK	P8660009 / 100121850	G130	P8660088 / 100122854	G150	P8680101 / 100122902	G150	P8680101 / 100122902	G150	
	TIBET ARENA	P8680018 / 100122073	G130	P8680111 / 100122852	G150	P8680129 / 100122900	G150	P8680129 / 100122900	G150	
	TIBET CALIZA	P8680025 / 100122076	G130	P8680100 / 100122856	G150	P8680099 / 100122904	G150	P8680099 / 100122904	G150	
	- HUELLA TÉCNICA MEC. 31,6x65,9cm	G132	- HUELLA TÉCNICA ESQ. DER/IZQ. MEC 31,6x65,9cm				G153			